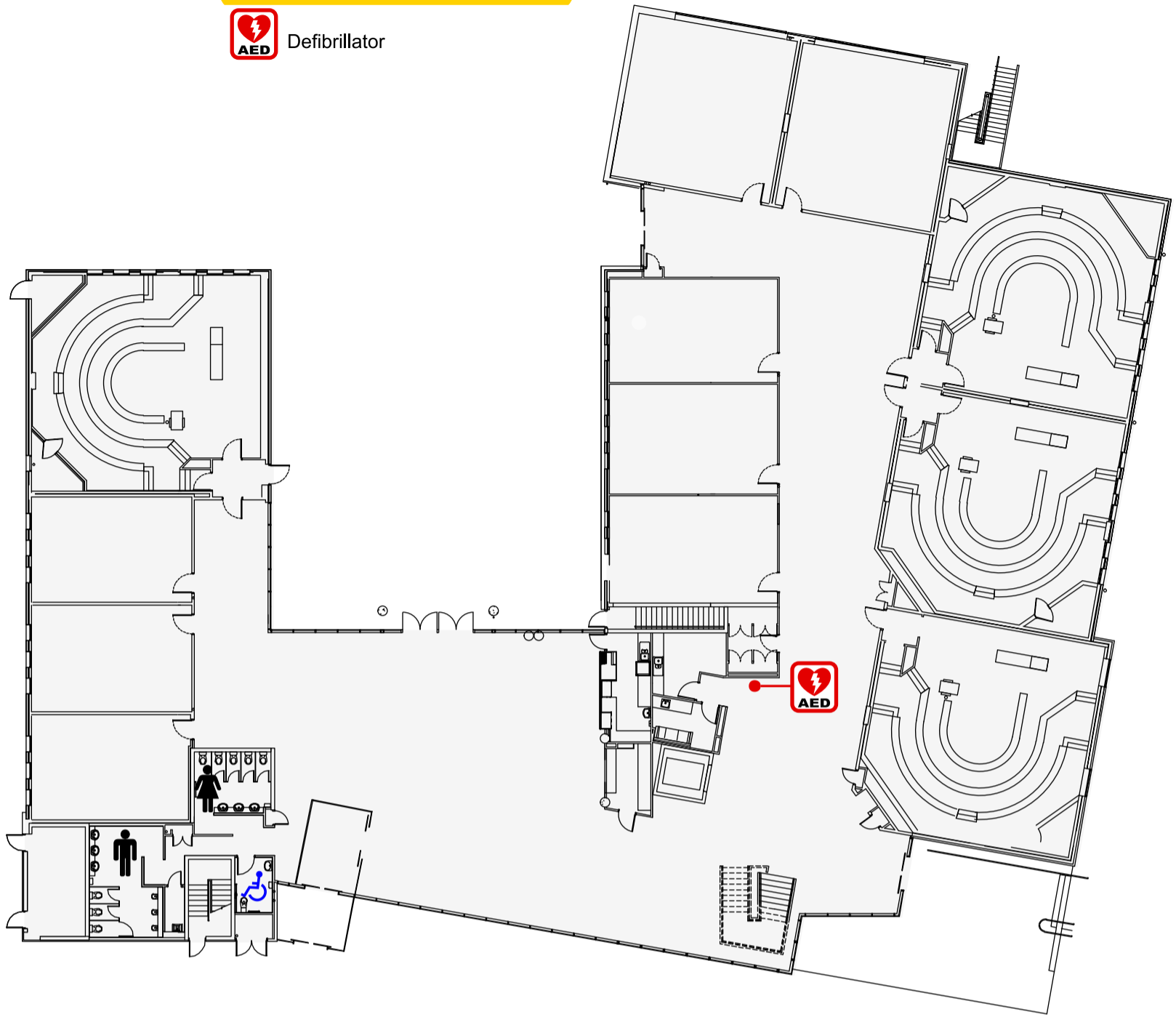




Automatic external defibrillator

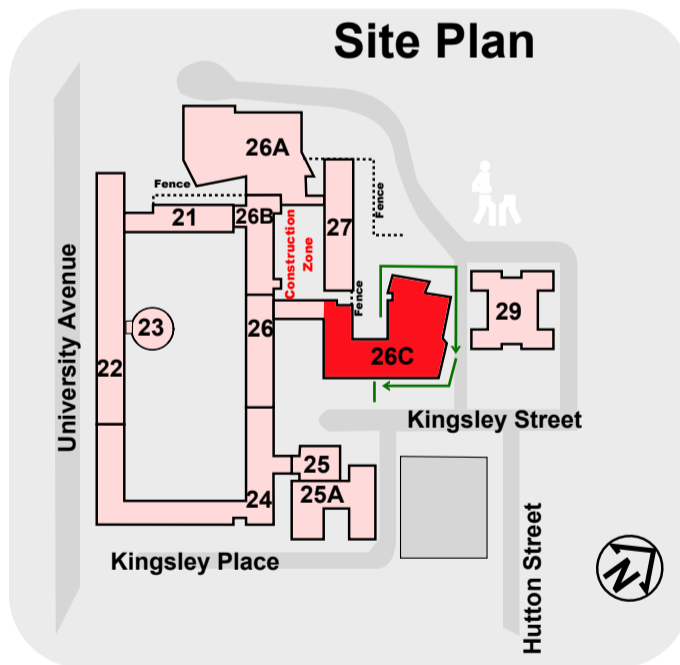


EMERGENCY PROCEDURES

- R** REMOVE people from the immediate danger.
- A** ALERT all people nearby. RAISE AN ALARM - DIAL 000
- C** CONFINE the Smoke and Fire, attempt to extinguish the fire if safe and trained to do so.
- E** EVACUATE the building and proceed to the Assembly Area

ANU Security 6125 2249 (X52249)
Then press 1 for emergency priority

Site Plan



FOR ALL EMERGENCY SERVICES
Dial 000
FOR ALL EMERGENCIES CONTACT SECURITY
Dial 52249
TEXT EMERGENCY CALL
Dial 106



Date issued: 24 October 2017
Review Date: October 2022
Version: 1.1
Ref: C237-1273