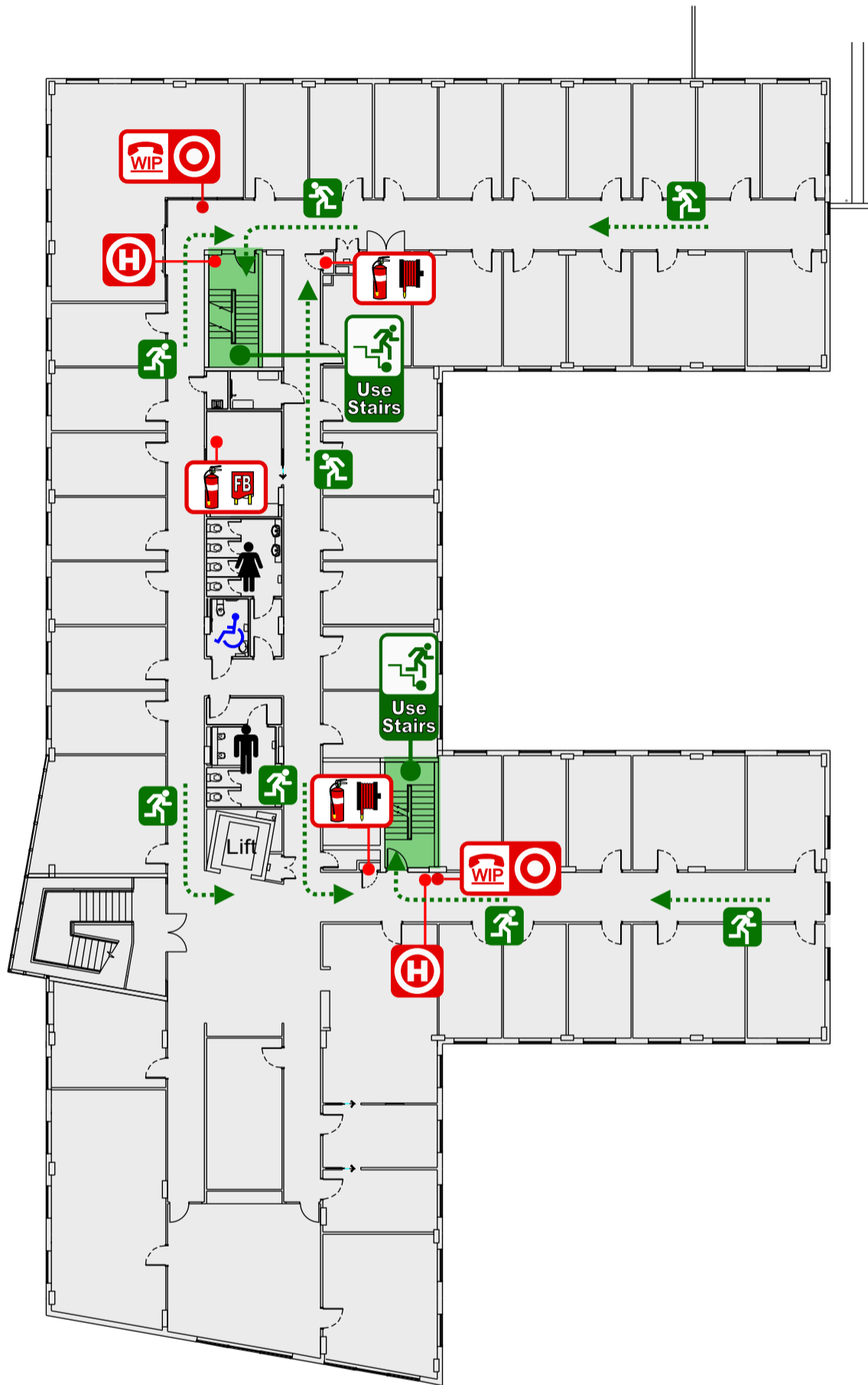


# EVACUATION DIAGRAM



Australian National University

**Floor 4 of Building 26C**  
Kingsley Street,  
ACTON ACT 2601



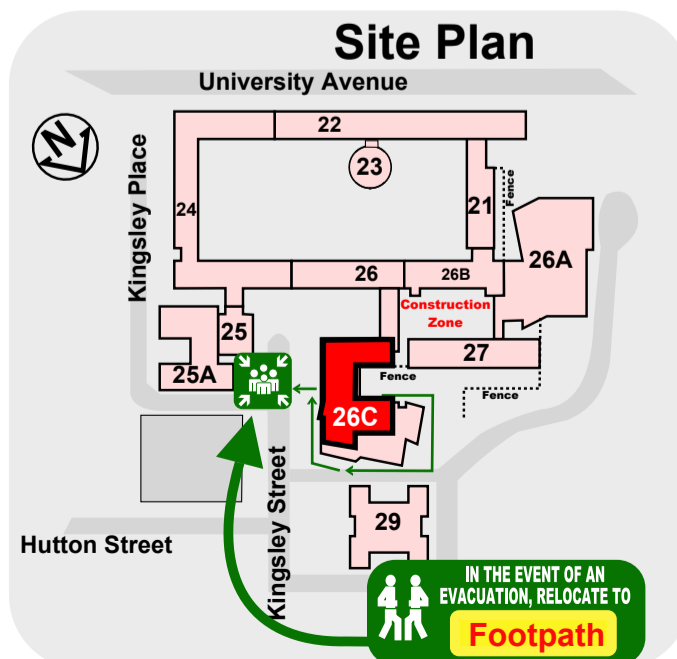
## Legend

- Fire Extinguisher DCP
- Fire Hose Reel
- Fire Hydrant
- Fire Blanket
- Manual Call Point Red Break Glass
- Warden Intercom Phone
- Assembly Area
- Egress Route

## EMERGENCY PROCEDURES

- R** REMOVE people from the immediate danger.
- A** ALERT all people nearby. **RAISE AN ALARM - DIAL 000**
- C** CONFINE the Smoke and Fire, attempt to extinguish the fire if safe and trained to do so.
- E** EVACUATE the building and proceed to the Assembly Area

**ANU Security 6125 2249 (X52249)**  
**Then press 1 for emergency priority**



FOR ALL EMERGENCY SERVICES  
**Dial 000**  
FOR ALL EMERGENCIES CONTACT SECURITY  
**Dial 52249**  
TEXT EMERGENCY CALL  
**Dial 106**



Date issued: 24 October 2017  
Review Date: October 2022  
Version: 1.1  
Ref: C237-1273